

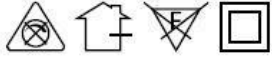
**GEM STAR 3W**

LED GEM STAR ROUND

**Indoor Luminaire Product Code:**

LGEMS01R03XC / LGEMS01R03XN / LGEMS01R03XW

3W - 240lm - 6500K - CRI>80 Ra - Beam Angle 60°



**Technical Specifications**

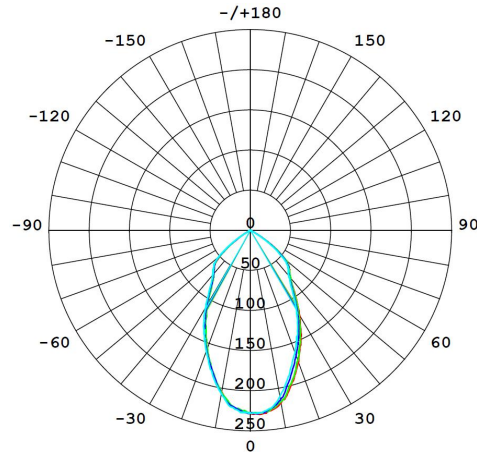
Operating Temperature	-10°C to 40°C
Rated Input Voltage & Frequency	230 VAC, 50Hz
Rated Input Wattage	3W ± 10%
Rated Input Current	0.018 Amp (Nominal)
Power Factor	≥0.90
ATHD	<30%
Rated Luminous Flux	240 lm / 225 lm / 210 lm (tolerance as per BIS)
Rated Luminaire Efficacy	80 lm/W / 75 lm/W / 70 lm/W (tolerance as per BIS)
Correlated Color Temperature (CCT)	6500 K / 4000 K / 3000 K (tolerance as per ANSI)
Color Rendering Index (CRI)	>80 Ra
Beam Angle	60° (within the permissible limits)
Driver Efficiency	≥80%
Life Span	>50000 Hrs (Ta=25°C @L70)
Housing	PC. Housing
Cover	PC. Diffuser
Mounting	Recess

**Protections**

Over Voltage Protection	Withstand upto 440V/AC upto 4 Hrs
Surge Protection	±4.0KV
Protection Class	Class II
Ingress Protection (IP Rating)	IP20
Impact Protection (IK Rating)	IK02
Short Circuit Protection	Provided
Open Circuit Protection (No Load)	Provided
Reverse Polarity Protection	Provided

All technical data is subject to industry-standard tolerances.

## Light Distribution

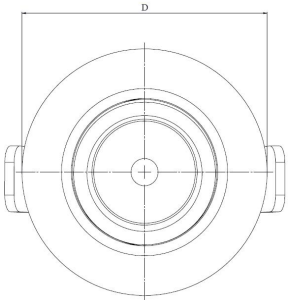
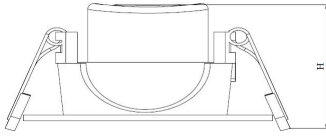


## UGR Table

ceiling/cavity	0.7	0.7	0.5	0.5	0.3	0.7	0.7	0.5	0.5	0.3		
walls	0.5	0.3	0.5	0.3	0.3	0.5	0.3	0.5	0.3	0.3		
working plane	0.2	0.2	0.2	0.2	0.2	0.2	0.2	0.2	0.2	0.2		
Room dimensions	Viewed crosswise					Viewed endwise						
x = 2H y = 2H	2H	14.5	15.7	14.8	15.9	16.1	14.1	15.3	14.4	15.4	15.6	
	3H	14.4	15.4	14.6	15.6	15.9	13.9	15.0	14.2	15.2	15.4	
	4H	14.3	15.3	14.6	15.5	15.7	13.9	14.8	14.1	15.1	15.3	
	6H	14.2	15.1	14.5	15.4	15.6	13.8	14.7	14.1	14.9	15.2	
	8H	14.1	15.0	14.5	15.3	15.6	13.7	14.6	14.0	14.9	15.1	
	12H	14.1	14.9	14.4	15.2	15.5	13.7	14.5	14.0	14.8	15.1	
	4H	2H	14.4	15.4	14.7	15.6	15.9	14.0	15.0	14.3	15.2	15.4
		3H	14.2	15.1	14.5	15.3	15.6	13.8	14.7	14.1	14.9	15.2
		4H	14.1	14.9	14.5	15.2	15.5	13.7	14.5	14.1	14.8	15.1
		6H	14.0	14.7	14.4	15.0	15.4	13.6	14.3	14.0	14.6	15.0
		8H	14.0	14.6	14.4	15.0	15.3	13.6	14.2	14.0	14.6	14.9
		12H	13.9	14.5	14.4	14.9	15.3	13.5	14.1	14.0	14.5	14.9
	8H	4H	14.0	14.6	14.4	15.0	15.3	13.6	14.2	14.0	14.6	14.9
		6H	13.9	14.4	14.3	14.8	15.2	13.5	14.0	13.9	14.4	14.8
		8H	13.8	14.3	14.3	14.7	15.2	13.4	13.9	13.9	14.3	14.8
		12H	13.8	14.2	14.3	14.6	15.1	13.4	13.8	13.9	14.2	14.7
	12H	4H	13.9	14.5	14.4	14.9	15.3	13.5	14.1	14.0	14.5	14.9
		6H	13.8	14.3	14.3	14.7	15.2	13.4	13.9	13.9	14.3	14.8
		8H	13.8	14.2	14.3	14.6	15.1	13.4	13.8	13.9	14.2	14.7
Variations with the observer position at spacings(CIE Pub.117):												
S = 1.0H		+ 1.4 / - 2.5					+ 1.7 / - 3.5					
1.5H		+ 0.6 / - 1.1					+ 0.8 / - 1.2					
2.0H		+ 3.1 / -13.9					+ 3.4 / -13.7					

## Product Dimensions (Dia.xH)

Ø70 x 35 mm (Tol. ± 5 mm), Cutout Size Ø60 mm



## Applications

Residences, Offices, Small Retail Shops,  
Hotels, Coffee Shops, Restaurants, Hospitals,  
area lighting and for other indoor applications.