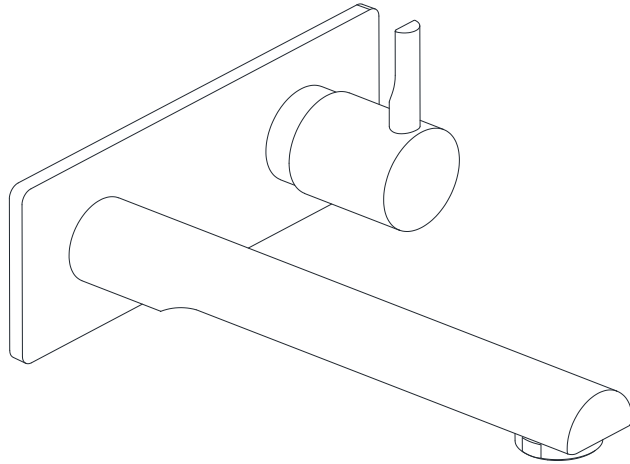


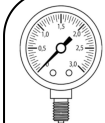



Exposed Part Kit of Single Concealed Stop Cock



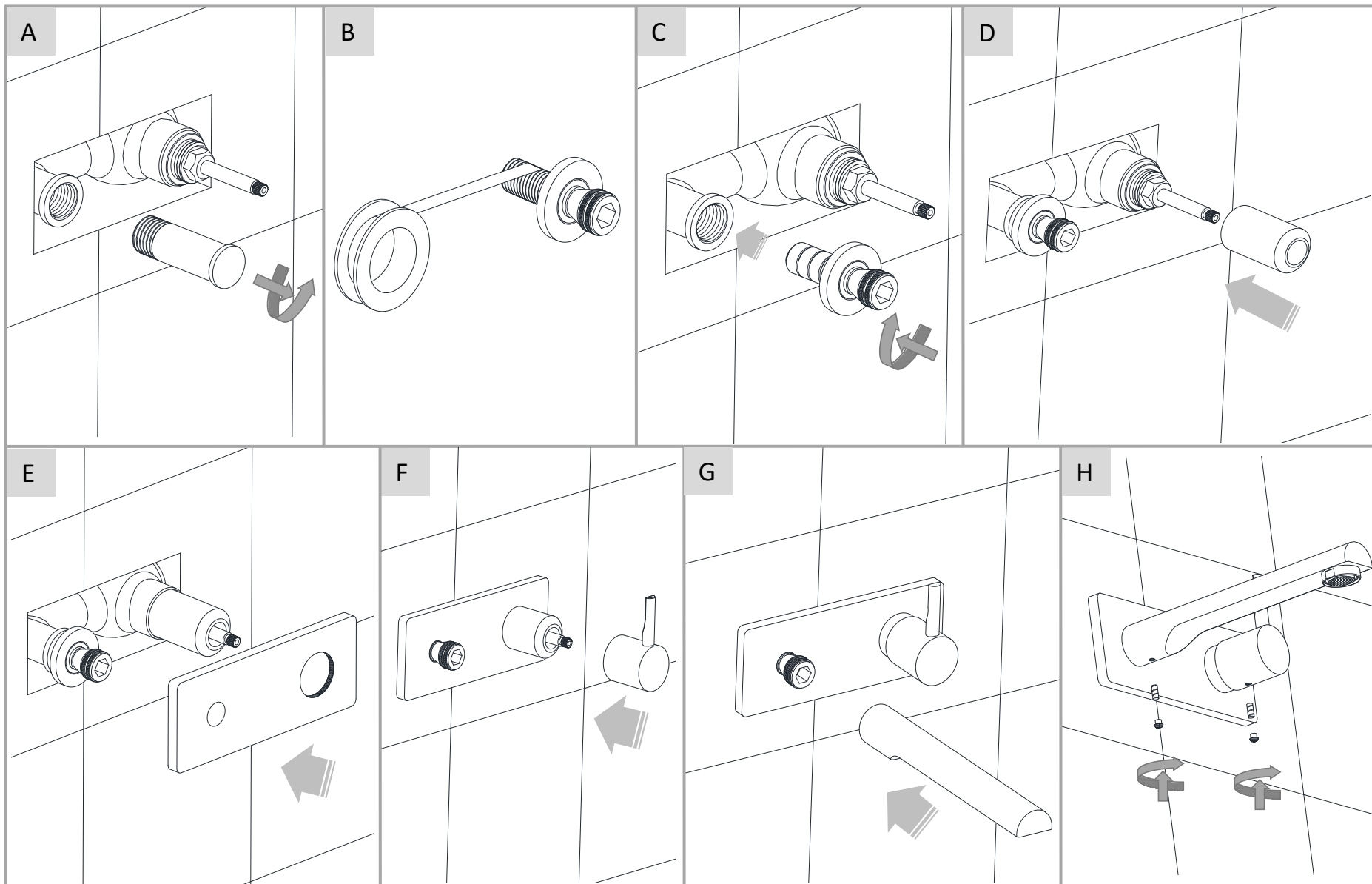
* Representative image

Temp & water pressure Requirement.

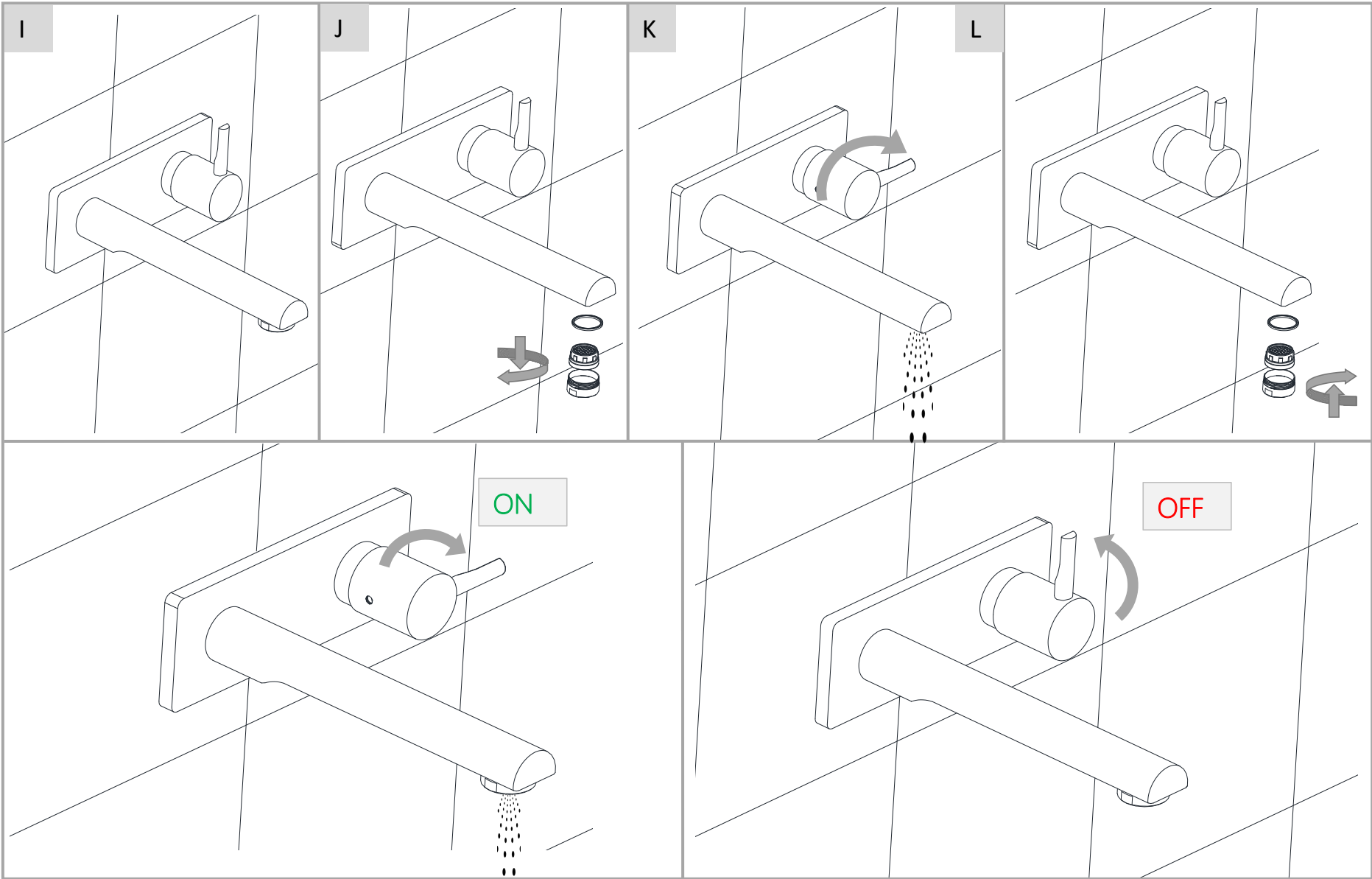
	Working Pressure: 1~3 bar
	Required Temperature: 5-65°C

- **Working Pressure:-**The water pressure should be Between 1 and 3 bar for proper functioning.
- **Required Temperature:-** The water temperature within the range of 5-65° for safe & effective use.
- **Note:-** These are recommended values for achieving conventional /Optimum output.

Note: THIS INSTALLATION MANUAL CAN BE REFERRED FOR ALL EXPOSED PART KIT CONCEALED STOP COCK.

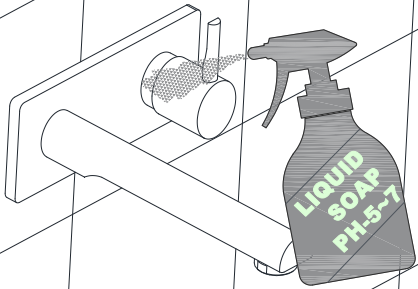
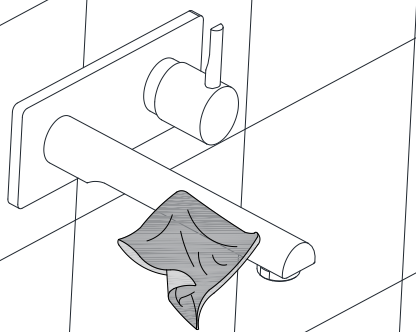

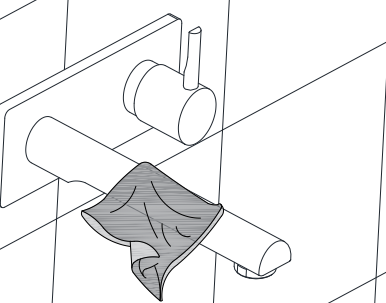
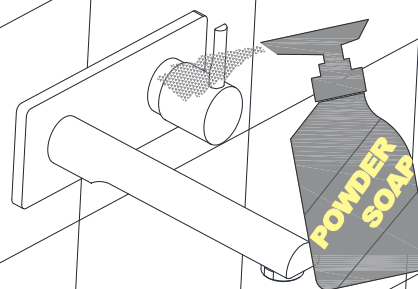
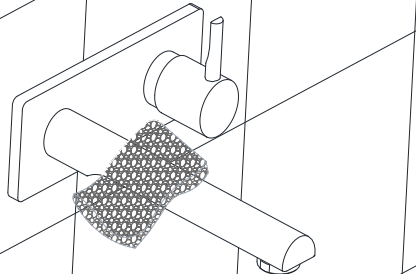
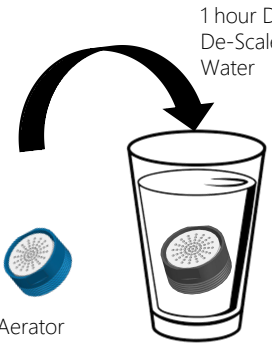






Note: THIS INSTALLATION MANUAL CAN BE REFERRED FOR ALL EXPOSED PART KIT CONCEALED STOP COCK.



Note: THIS INSTALLATION MANUAL CAN BE REFFERED FOR ALL EXPOSED PART KIT CONCEALED STOP COCK.



 <p>Note: Apply liquid soap pH-B/W 5~7 or Glitz .</p>	<p>Apply soft cotton cloth</p> 		<p>Apply soft cotton cloth</p> 
 <p>❌ DON'T</p>	<p>Don't apply Scrub</p>  <p>❌ DON'T</p>	<p><u>Steps & Cleaning agents requirements for Cleaning.</u></p> <div style="text-align: center;">  <p>1 hour Dip in De-Scale Water</p> </div> <div style="display: flex; justify-content: space-around; align-items: center;"> <div style="text-align: center;">  <p>De-Scale Water</p> </div> <div style="text-align: center;">  <p>Liquid Soap PH-5-7</p> </div> <div style="text-align: center;">  <p>For Non Chrome Surface</p> </div> <div style="text-align: center;">  <p>For Chrome Surface</p> </div> </div> <p>Recommended Cleaning:- Twice a week.</p>	

Note: THIS INSTALLATION MANUAL CAN BE REFERRED FOR ALL EXPOSED PART KIT CONCEALED STOP COCK.