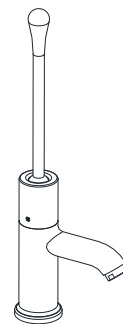




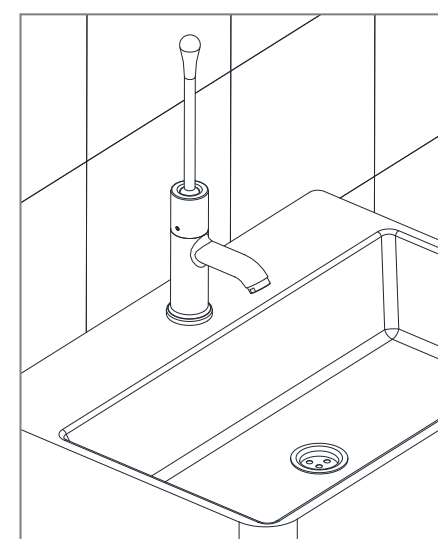
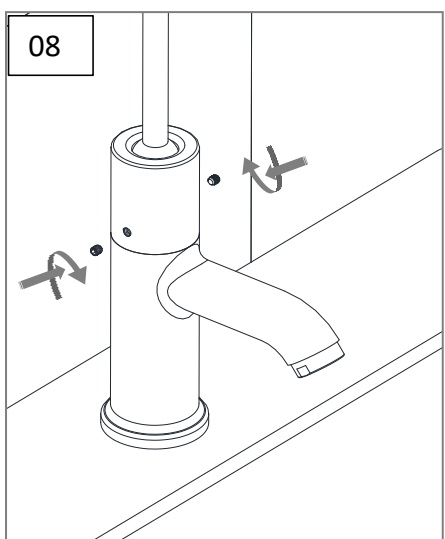
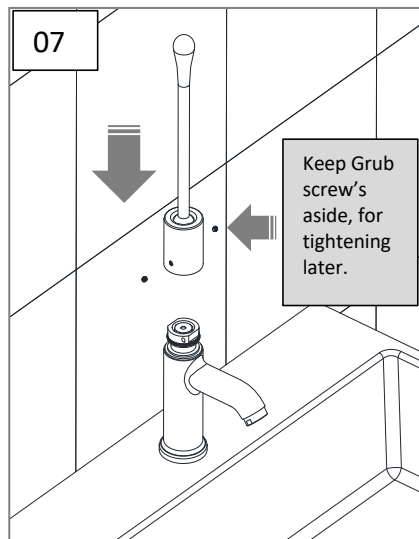
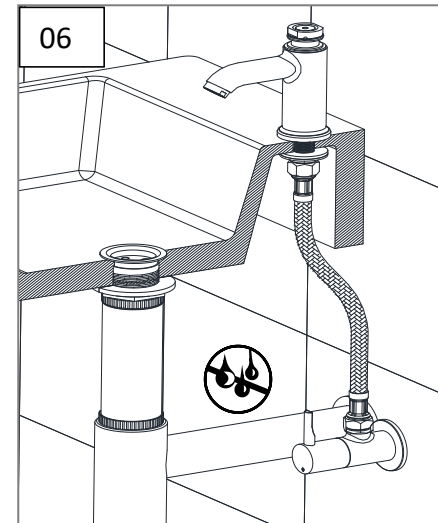
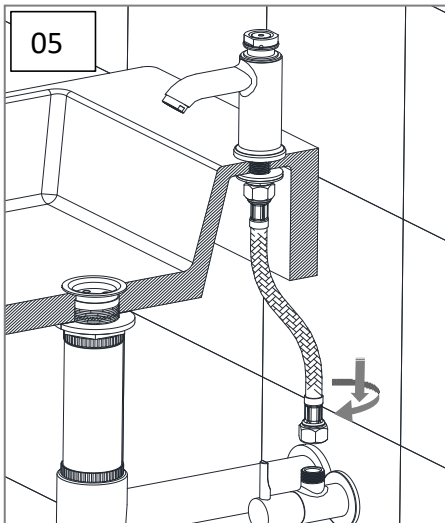
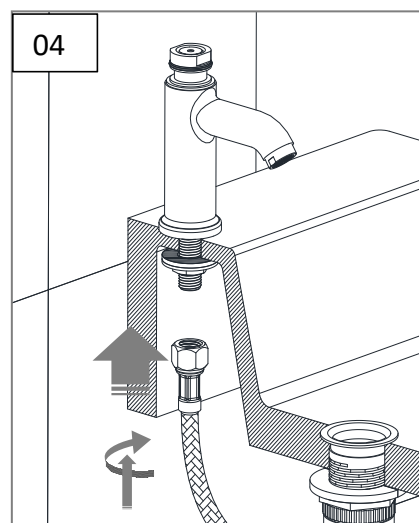
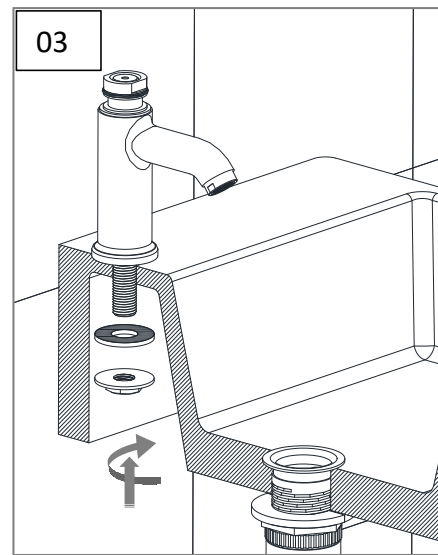
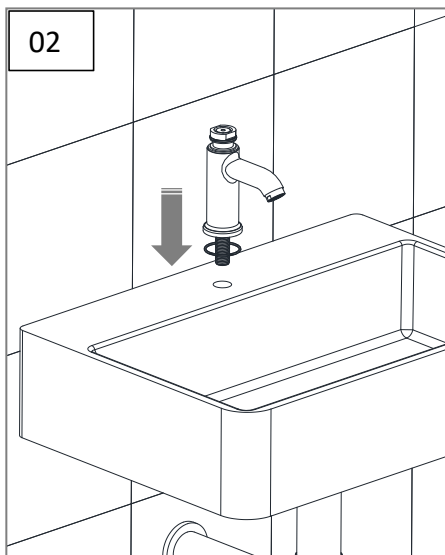
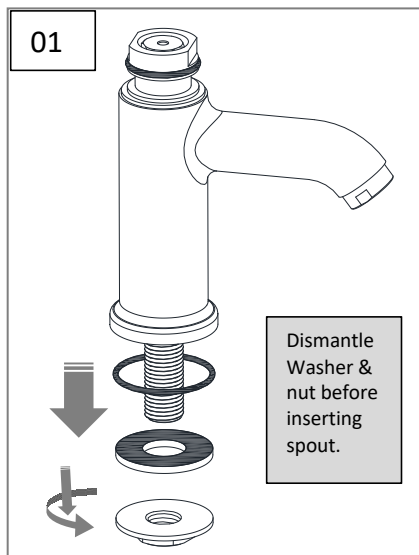
**Note: THIS INSTALLATION MANUAL CAN BE REFERRED FOR PILLAR
COCK AUTO CLOSING SYSTEM & ELBOW OPERATED EXTENDED
LEVER**

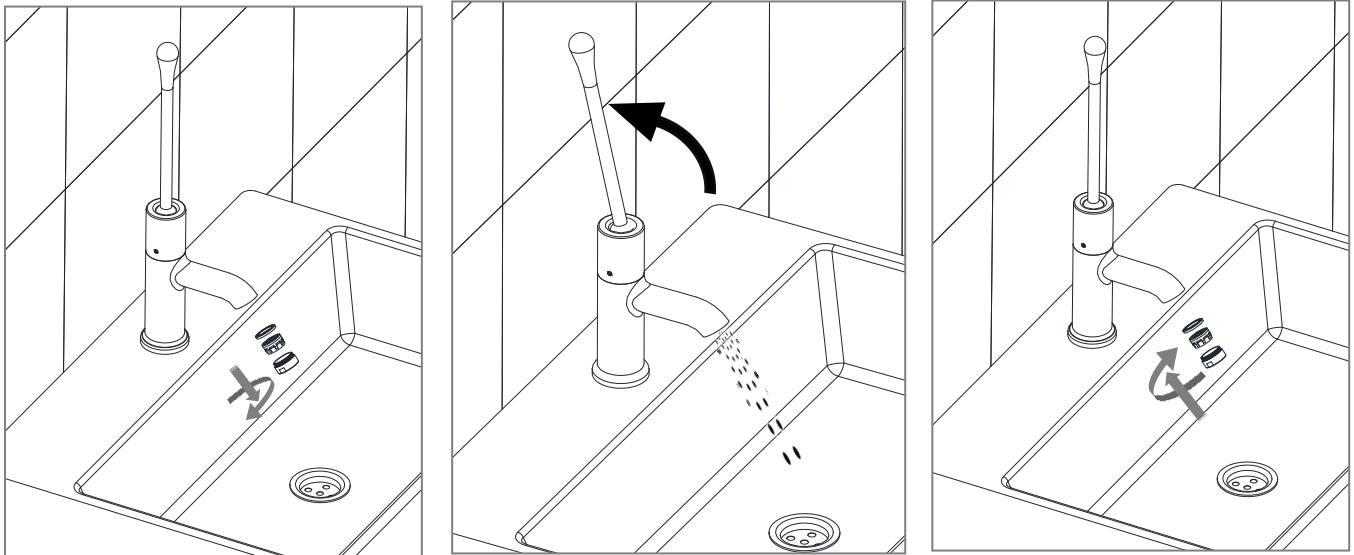
Requirements:-

- ◆ Water line, braided hose for connection to Angle valve.
- ◆ Wrench for fitting & tightening.

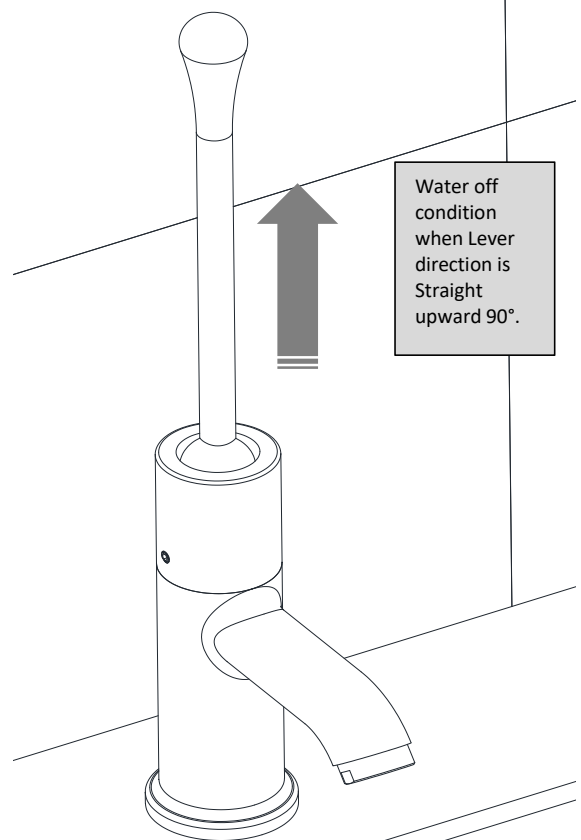
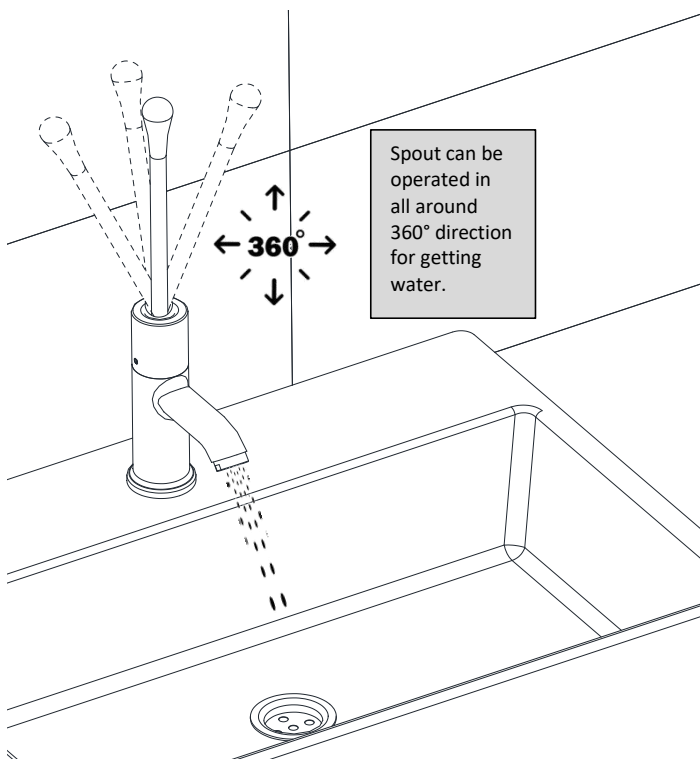


* Representative image





How to operate



Safety Tips :-

- ❖ Make sure Water supply off during Hose connection.
- ❖ Check for Leakage, once connection is done.
- ❖ Make sure no loose fitting:
- ❖ Avoid any leakage during connection.
- ❖ Use soft cotton cloth for cleaning , don't use hard bush or scrub.

**Note: THIS INSTALLATION MANUAL CAN BE REFFERED FOR PILLAR COCK
AUTO CLOSING SYSTEM & ELBOW OPERATED EXTENDED LEVER**



Correct Cleaning Steps:

1. Apply Liquid Soap (pH ~7):

Use a mild liquid soap (pH 5-7) or Glitz solution with a neutral water.

Spray it gently on the Outer surface of Product.

2. Use a Soft Cotton Cloth:

Wipe the Product with a soft cotton cloth to remove dirt, stains, or water marks.

This prevents scratches and keeps the surface shiny.

3. Rinse with Water:

Spray clean water on the fitting after wiping with soap.

This helps remove any soap residue.

4. Final Wipe with Soft Cotton Cloth:

Again, wipe with a soft cotton cloth to dry the fitting.

This ensures no water spots are left.

✗ Don'ts (Avoid These):

Don't use Powder Soap:

It can be abrasive and scratch the fitting surface.

Don't use Scrubbing Pads:

Scrubbing with rough materials can damage the finish and reduce shine.

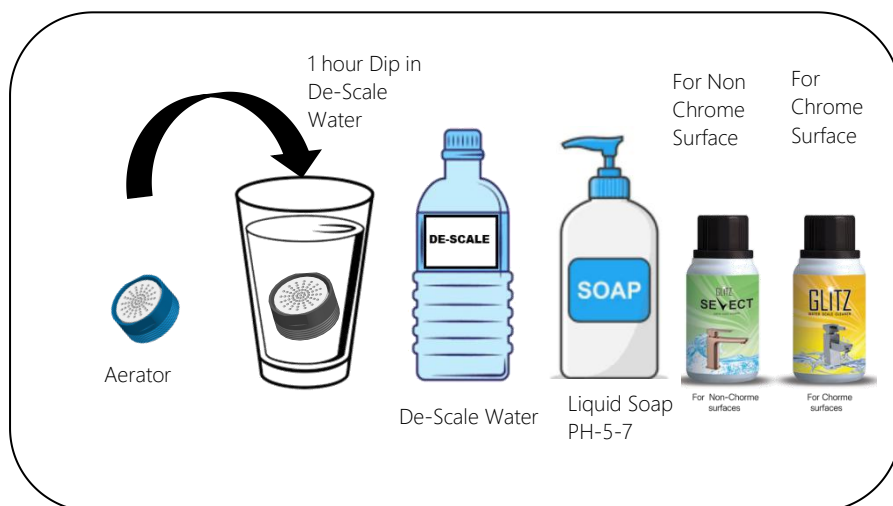
For Non
Chrome
Surface

For
Chrome
Surface



**Recommended Cleaning:-
Twice in a Week.**

Steps & Cleaning agents requirements for Cleaning.



**Note: THIS INSTALLATION MANUAL CAN BE REFFERED FOR PILLAR COCK
AUTO CLOSING SYSTEM & ELBOW OPERATED EXTENDED LEVER**