



OPS-WHT-15851S300UFSMTL

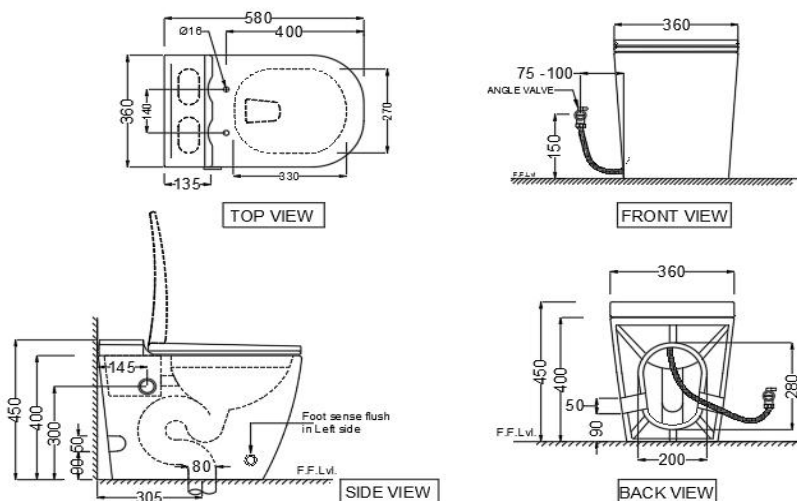
PRODUCT DETAILS

Manufacturer :	Jaquar	Type:	Tankless Single Piece WC
Colour:	White	Flush valves	Single flush with Sensor
Outlet	Vertical	Material:	Ceramic - Vitreous China
Technical Details:	External diameter of outlet hole Ø 80 mm provide connector pipe product.		

ARTICLE NAME: WALL HUNG WC



TECHNICAL DIMENSIONS



PRODUCT SPECIFICATION

Product Dimension	360x580x450 mm
Water pressure requirement/pressure requirement	1.5bar-5.0 bar (dynamic)
Sensor range	180 mm from the edge of Sensor
self operating water temperature range	2-70°C
Sensor type and IP	Passive - IP 68
Operated by Batterys	4 units of AA Alkalines

FUNCTIONS/FEATURES

Adjustable Seat temperature, Dual Wash Function, Warm Air Dryer with Adjustable temperature, Adjustable water flow & temperature, Anti bacterial seat & nozzle, Remote Control, Instant Water heating, Auto deodorization, Night light, LCD digital display, Spray Nozzle with Anti-bacteria and UV sterilization.

ACCESSORIES PROVIDED

UF Seat Cover	OPS-WHT-15107UF
toilet sealing ring	ZPS-WHT-1401
angle valve with Fittings	ZPS-WHT-LT008
Floor Fixing Screw	ZPS-SNS-FB02

CARE AND CLEANING GUIDELINES

- Vitreous china sanitary ware products are fragile in nature and need to be handled with care (to avoid personal injury) at all times during its storage, handling, installation and use thereafter.
- The product is heavy and it is recommended that two persons hold it while it is being fixed.
- Carefully inspect the new product for damage before installation.
- Risk of product damage. Over tightening may cause breakage or chipping of vitreous china.
- Risk of external leakage. Do not lift or rock the bowl after placement.
- Always test your cleaning solution on an inconspicuous area on the product before applying it to the entire surface.
- Do not allow cleaners to sit or soak on the product.
- Use a soft, dampened sponge or cloth to clean. Never use abrasive material like a bristle brush or scouring pad.
- Wipe surfaces clean and rinse completely with water immediately after applying cleaners.
- Clean Chrome, stainless steel surfaces once a week. Do not use cleaners containing chloride on chrome, stainless steel. If used, rinse the surface immediately to prevent corrosion.
- Wherever chrome plating is used on the products, use only warm water to clean and then dry with a soft cloth.

CERTIFICATION

Compliance : EN 997:2012 + A1:2015 (E), SANS 497:2011

All technical dimensions are in accordance to British standards, Bureau of Indian Standards



DISCLAIMER: Our every effort has been made to ensure factual accuracy, the information presented subject to changes due to requirements in different sites, markets and/ or countries. All dimensions are in mm (Tolerance ± 5 MM). Jaquar reserves the right to make the necessary amendments at any time without prior notice.