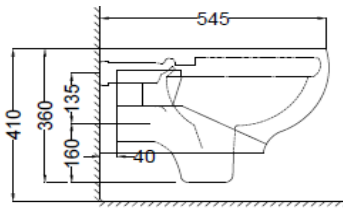
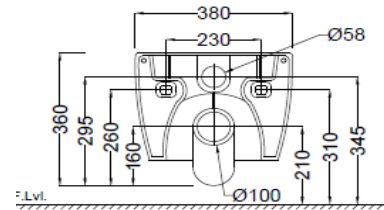


TOP VIEW



SIDE VIEW



BACK VIEW

**General Information**

Product Code	CNS-WHT-961NUF
Brand	Jaquar
Colour	White
Type	Wall Hung WC
Material	Ceramic-Vitreous China (VC)

**Product Specification**

Product Dimension	380X545X360 mm
Bowl Opening (Inner Dimension)	280x330 mm
Product Net Weight	22 kg
Product Gross Weight	27 kg
Packaging Dimension	450x380x560mm
Outlet	Horizontal
Outlet Hole Dimension	External diameter of outlet hole dia. $\varnothing 100 \pm 5$ mm Vertical distance between the Floor and the centre line of the waste outlet hole $\leq 220$ mm
Product Features	Rimless Wall Hung WC ,Suitable for smaller bathrooms. UF Soft Close Seat Cover,Completr Trap Glaze, Regular, Dual & I Flush advantages Dual Flush-3/6 LPF,Anti germ glaze.

**ACCESSORIES PROVIDED**

Seat Cover	CNS-WHT-115UF
Inlet & Outlet gasket	ZPS-WHT-GK01

**ACCESSORIES RECOMMENDATION**

Rag bolt	ZPS-MST-RB07
Concealed cistern	JCS-WHT-2400S, 2400P, 2400, 2400WS, 2400WP, 2400FS, 2400FP, 2431P, 2431FP, 2431, 2431S, 2431FS

**CARE AND CLEANING GUIDELINES**

- Vitreous china sanitary ware products are fragile in nature and need to be handled with care (to avoid personal injury) at all times during its storage, handling, installation and use thereafter.
- The product is heavy and it is recommended that two persons hold it while it is being fixed.
- Carefully inspect the new product for damage before installation.
- Risk of product damage. Over tightening may cause breakage or chipping of vitreous china.
- Risk of external leakage. Do not lift or rock the bowl after placement.
- Always test your cleaning solution on an inconspicuous area on the product before applying it to the entire surface.
- Do not allow cleaners to sit or soak on the product.
- Use a soft, dampened sponge or cloth to clean. Never use abrasive material like a bristle brush or scouring pad.
- Wipe surfaces clean and rinse completely with water immediately after applying cleaners.
- Clean Chrome, stainless steel surfaces once a week. Do not use cleaners containing chloride on chrome, stainless steel. If used, rinse the surface immediately to prevent corrosion.
- Wherever chrome plating is used on the products, use only warm water to clean and then dry with a soft cloth.

**QUALITY MANAGEMENT SYSTEM - ISO 9001**



DISCLAIMER: Our every effort has been made to ensure factual accuracy, the information presented subject to changes due to requirements in different sites, markets and/ or countries. All dimensions are in mm (Tolerance  $\pm 5$  MM). Jaquar reserves the right to make the necessary amendments at any time without prior notice.

# For Installation Refer Actual Product

Prepared by



Checked by

Approved by