

### AQUILA 15W

AQUILA RECESSED MOVABLE DOWN LIGHT 3X5W

Indoor Luminaire

Product Code:

LAQL01R305XC / LAQL01R305XN / LAQL01R305XW  
15W - 1050lm - 6500K - CRI>80 Ra - Beam Angle - 22°



### Technical Specifications

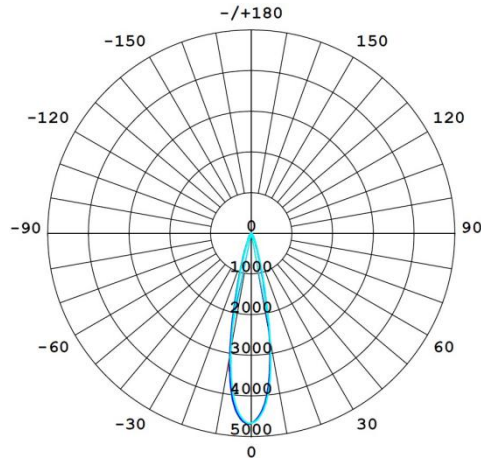
Operating Temperature	-10°C to 40°C
Rated Input Voltage & Frequency	220 ~ 240 VAC, 50Hz
Rated Input Wattage	15W ± 10%
Rated Input Current	0.068 Amp (Nominal)
Power Factor	≥0.90
ATHD	<10%
Rated Luminous Flux	1050 lm / 1005 lm / 945 lm (tolerance as per BIS)
Rated Luminaire Efficacy	70 lm/W / 67 lm/W / 63 lm/W (tolerance as per BIS)
Correlated Color Temperature (CCT)	6500 K / 4000 K / 3000 K (tolerance as per ANSI)
Color Rendering Index (CRI)	>80 Ra / >90 Ra / >90 Ra
Beam Angle	22° (within the permissible limits)
Driver Efficiency	>85%
LED Life Span	>50000 Hrs (Ta=25°C @L70)
Housing	Aluminium Housing with White/Black Powder Coating
Lens / Reflector	PC Diffuser
Mounting	Recessed

### Protections

Over Voltage Protection	Withstand upto 440V/AC for 4 Hrs.
Surge Protection	±4.0KV
Protection Class	Class II
Ingress Protection (IP Rating)	IP20
Impact Protection (IK Rating)	IK02
Short Circuit Protection	Provided
Open Circuit Protection (No Load)	Provided
Reverse Polarity Protection	Provided

All technical data is subject to industry-standard tolerances.

## Light Distribution

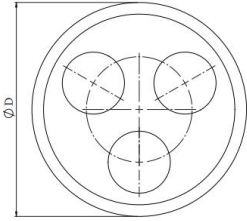
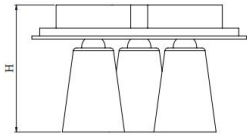


## UGR Table

ceiling/cavity	0.7	0.7	0.5	0.5	0.3	0.7	0.7	0.5	0.5	0.3
walls	0.5	0.3	0.5	0.3	0.3	0.5	0.3	0.5	0.3	0.3
working plane	0.2	0.2	0.2	0.2	0.2	0.2	0.2	0.2	0.2	0.2
Room dimensions	Viewed crosswise					Viewed endwise				
x = 2H y = 2H	8.9	9.6	9.1	9.7	9.9	9.5	10.2	9.7	10.3	10.5
3H	8.8	9.4	9.0	9.6	9.7	9.4	10.0	9.6	10.2	10.4
4H	8.7	9.3	8.9	9.5	9.7	9.3	9.9	9.6	10.1	10.3
6H	8.6	9.1	8.9	9.4	9.6	9.2	9.8	9.5	10.0	10.2
8H	8.6	9.1	8.9	9.3	9.6	9.2	9.7	9.5	9.9	10.2
12H	8.5	9.0	8.8	9.3	9.5	9.1	9.6	9.4	9.9	10.2
4H 2H	8.7	9.3	9.0	9.5	9.7	9.3	9.9	9.6	10.1	10.3
3H	8.6	9.1	8.9	9.3	9.6	9.2	9.7	9.5	9.9	10.2
4H	8.5	8.9	8.8	9.2	9.5	9.1	9.5	9.4	9.8	10.1
6H	8.4	8.8	8.7	9.1	9.5	9.0	9.4	9.3	9.7	10.0
8H	8.3	8.7	8.7	9.0	9.4	8.9	9.3	9.3	9.6	10.0
12H	8.3	8.6	8.7	9.0	9.4	8.9	9.2	9.3	9.6	10.0
8H 4H	8.3	8.7	8.7	9.0	9.4	8.9	9.3	9.3	9.6	10.0
6H	8.2	8.5	8.6	8.9	9.3	8.8	9.1	9.2	9.5	9.9
8H	8.1	8.4	8.6	8.8	9.3	8.7	9.0	9.2	9.4	9.9
12H	8.1	8.3	8.5	8.8	9.2	8.7	8.9	9.1	9.4	9.8
12H 4H	8.3	8.6	8.7	9.0	9.4	8.9	9.2	9.3	9.6	10.0
6H	8.1	8.4	8.6	8.8	9.3	8.7	9.0	9.2	9.4	9.9
8H	8.1	8.3	8.5	8.8	9.2	8.7	8.9	9.1	9.4	9.8
Variations with the observer position at spacings (CIE Pub.117) :										
S = 1.0H	+ 2.3 / - 7.4					+ 2.3 / - 6.4				
1.5H	+ 2.5 / - 5.0					+ 2.8 / - 4.8				
2.0H	+ 4.9 / - 1.5					+ 5.0 / - 1.5				

## Product Dimensions (DiaXH)

Ø 148 x 88mm (Tol. ± 5 mm), Cutout Size 140mm



## Applications

Residences, Offices, Small Retail Shops,  
Hotels, Coffee Shops, Restaurants, Hospitals,  
area lighting and for other indoor applications.